



SCHACHINGER
LOGISTIK
 Branchenlogistik weitergedacht.

SUSTAINABILITY



WE ARE YOUR SCOPE 3



HOLISTIC SUSTAINABILITY MANAGEMENT FOR TODAY'S LOGISTICS

**ACCELERATING THE
 SHIFT BEYOND
 FOSSIL ENERGY**



“The decision for a more sustainable future lies with us humans. Let us begin to recognize our own contribution and change our actions!

It cannot be the case that the use of gas and diesel leads to harmful CO₂ emissions and finances terrible wars or authoritarian regimes. That is why, for me, decarbonization means: Moving away from fossil energy sources.”

- Max Schachinger
 Eigentümer

Our sustainability strategy “Driving Change” follows a holistic CSR/ESG approach that integrates environmental, economic, and social responsibility.

As a modern logistics partner, we actively embrace our responsibility and have therefore implemented a structured action program that has been guiding our emission-reduction efforts for many years.

Scope 3 evaluations of energy consumption and greenhouse gas emissions are calculated in accordance with the relevant Austrian standards and the GLEC Framework, and are prepared in line with the requirements of the European Sustainability Reporting Standards (ESRS). We are SBTi-Committed, report our environmental data annually to CDP, and have been assessed by Ecovadis since of our FY 2022/23.

For us, “Driving Change” means consistently driving sustainable transformation – today and in the future.



**DRIVING
 CHANGE**

SUSTAINABILITY STARTS AT THE TOP

SUSTAINABILITY IN PRACTICE AT ALL LEVELS

GRI, CSRD, ESRS, CSDDD,...

The new reporting requirements can sometimes seem challenging. To stay up-to-date, the SCHACHINGER sustainability team regularly attends training courses and organizes workshops on that topic.

>>> GREEN LOGISTICS! BUT HOW?

Sustainability management plays a far-reaching role at SCHACHINGER. Responsibilities extend to the highest management level. A positive attitude and openness towards sustainable development are essential for management, particularly when making investment decisions.

Our department for the integrated sustainability management system consists of an ESG committee, ad-hoc steering groups and a dedicated sustainability team in operations.

For sustainability reporting, we rely on proven national and international guidelines, e.g. GRI, VSME, ESRS (ESRS 1, 2, E1-5, S1-4 and G1) and ECG (Economy for the Common Good)..

>>> STILL OFFSETTING - OR ALREADY REDUCING?

At SCHACHINGER, we're doing both. Complete decarbonization won't happen overnight. Until then, we consider it our duty to take responsibility for the emissions we can't yet avoid or reduce.

For years we have been supporting a forest conservation project in the Karwendel mountains (Austria), and we also support the Mur floodplains in Styria. Internationally, our projects include a wind farm in Turkey, microloans for clean energy in India, and forest and climate protection in Colombia.

SCHACHINGER is currently constructing a battery storage system with a capacity of 60 MWh. An expansion of the photovoltaic systems from their current total output of 4.4 MWp to approximately 9 MWp is also ongoing. We are also making a significant contribution to biodiversity through various projects. The creation of company and community gardens at our logistics sites is being initiated and supported by our employees. These gardens contribute to both increased biodiversity and social sustainability.

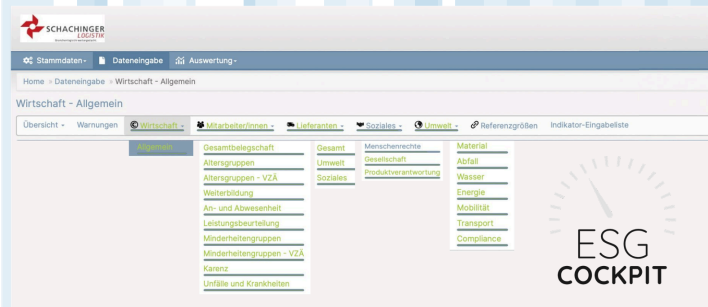
SCHACHINGER is developing its supplier relationship management into a fully ESG-oriented management tool. A supplier code of conduct, standardized risk analyses, and regular audits ensure compliance with environmental, social, and ethical standards. An annual ESG rating and the use of the ESG Performer tool create transparency and initiate targeted improvements. At the same time, SCHACHINGER supports its partners in the transition to climate-friendly solutions and is working with key suppliers on shared climate targets to reduce emissions.

“You can’t manage what you don’t measure” - Peter Drucker

DATA - THE KEY TO MODERN BUSINESS MANAGEMENT

DATA COLLECTION, BUT WITH A SYSTEM

We use the tool ESG-Cockpit to monitor our economic, social, and environmental performance, which is based on and verifies international and national criteria and standards. This allows us to manage performance at our various site.



We would like to share our experiences with the tool with you:
ESG@schachinger.com

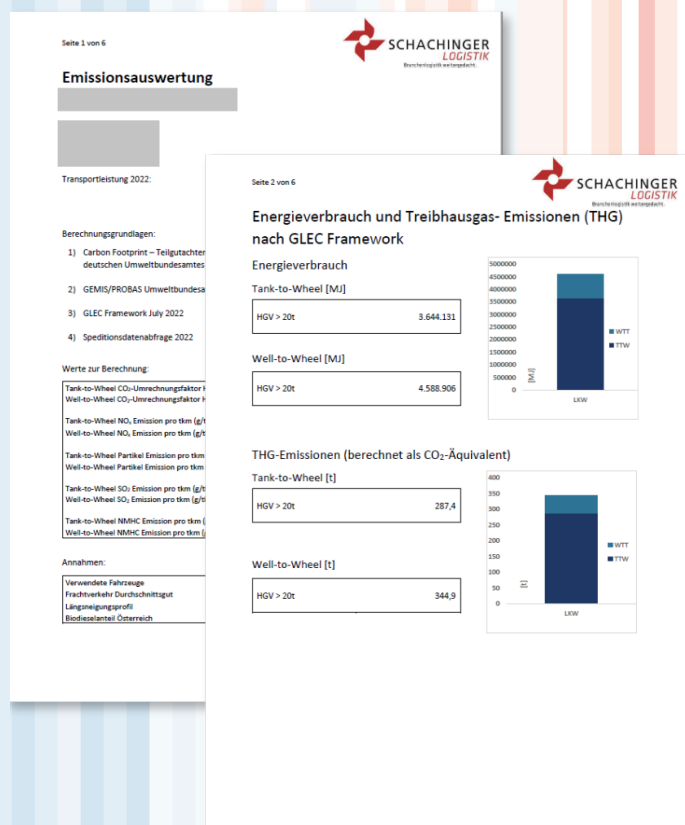
ESG-COCKPIT

The ESG-Cockpit is a state-of-the-art tool for sustainable corporate governance and sustainability management. It enables the simple and decentralized management of sustainability-relevant data and the calculation of ESG indicators according to standards such as ESRS, GRI, CDP, GHG, GLEC, SBTi, etc.

SUSTAINABLE DELIVERY RESULT

In our order management system, we have created the basis for collecting and calculating the CO₂ emissions of your individual order.

An additional sustainability service for our customers is a detailed emissions report for their controlling or reporting.



A RELIABLE PARTNER WHO DOES THEIR HOMEWORK.

AUDITED AND TRANSPARENT

»»» SCOPE 3 IS WHERE THINGS GET COMPLICATED - NOT WITH US!

Scope 3 emissions reporting is one of the many challenges companies face. Emissions from indirect activities are difficult to measure. Data must be collected from various sources, such as suppliers, customers, and partners, which is immensely time-consuming, especially if these sources are not adequately prepared.

At SCHACHINGER, we make it easy for you.

We will gladly provide you with a detailed breakdown of the individual emissions for your services, both in the transport and warehousing sectors. In doing so, we adhere to internationally recognized standards such as ISO 14083, the GLEC Framework, and the GHG Protocol.

OUR GUIDING PRINCIPLES, CERTIFICATIONS, RATINGS AND SOCIAL SYSTEMS AT A GLANCE:

- ISO 45001
- ISO 14001
- ISO 9001
- ISO 26000
- AA1000AP
- UN SDGs
- Company CoC
- Pillar II
- EcoVadis
- OECD
- SAQ 5.0
- CDP
- ONR 192500
- SBTi
- SPP
- ECG
- Quality seal for workplace health promotion
- Quality seal "Audit workandfamily"
- Family Charter
- Leadership principles



pharma & healthcare
warehousing

pharma & healthcare
transport



marken & frische
Lebensmittel-
logistik

baulogistik

transport & automotive

SHP
Spedition

packagelogistics

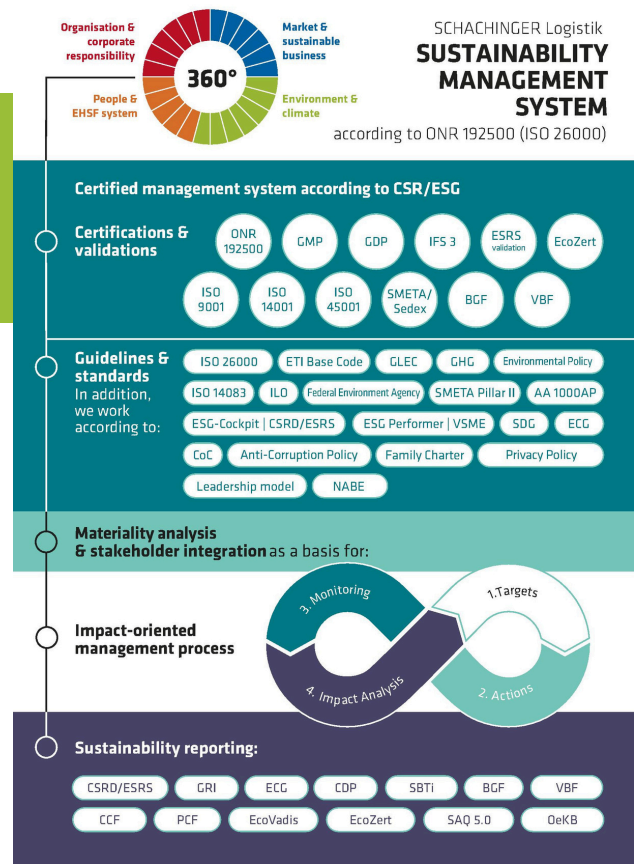
high
sensitive
logistics

LEADING - AND FOR GOOD REASON

WE REPORT IN ORDER TO
MAKE AN IMPACT!

THE SCHACHINGER SUSTAINABILITY MANAGEMENT SYSTEM

➤➤➤ ACCORDING TO ONR 192500



The 360-degree impact of sustainable development within a company depends on a holistic implementation. Structurally, this involves not only analyzing the current situation but also defining goals and the measures for achieving them. Adhering to standards is crucial in this process. An integrated CSR management system is therefore essential. ESG is often referred to as the new CSR.

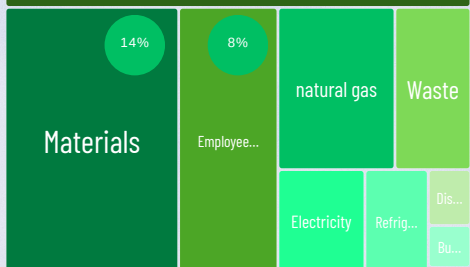
CSR is the strategic focus on economic, environmental, and social factors in our core business - while ESG provides guidance for financially sound reporting in line with the EU Green Deal. Therefore, we work strategically according to CSR- and ESG-oriented management guidelines. As a framework, we implement the content of the certified and integrated sustainability management system, ONR 192500.

In conclusion: CSR is not an add-on, but an integral part of modern corporate management. It combines economic efficiency with social responsibility and ecological foresight – thus creating the foundation for sustainable success.

➤➤➤ SOCIAL SUSTAINABILITY

SCHACHINGER Logistics understands a social work environment as an interplay of physical safety, mental health, and cultural belonging. Measures in the area of social impact range from ergonomic workstations and flexible working hours to mental health promotion. With the "audit workandfamily" (VBF) and "Workplace Health Promotion" (BGF) quality seals, systematic programs have been established that address the needs of all employee groups – office staff, drivers, and warehouse workers.

Fleet



Scope 1 & 2 + selected Scope 3



WE ARE CONTINUOUSLY REDUCING OUR CO2 FOOTPRINT

FOR THE ENVIRONMENT, BUT ALSO FOR YOU AS A CUSTOMER

PEOPLE

Saving energy is possible without high investment costs. Following the motto, "Everyone can contribute," we train our employees in resource management. In doing so, we aim to counteract energy waste not only as a company, but also in our private lives.

With our risk analysis and the ESG Performer® rating program for our suppliers, we are happy to fulfill our duty of care, as this also reduces our risk.

BUILDINGS AND FACILITIES

In the construction and operation of our properties, we always ensure the use of modern heating and cooling systems. Photovoltaic systems with a current total output of 4.4 MWp, and a planned 9 MWp (including full and surplus feed-in systems), supply green electricity for our facilities and vehicle fleet. Furthermore, we source 100% UZ46-certified green electricity at all our own locations. To unlock further optimization potential, we will implement a digital metering and monitoring system in the future.

-600 tCO₂ p.a.
FROM GAS TO BIOMASS

At the main site in Hörsching, a biomass microgrid was built to heat the entire logistics park.

This will reduce our gas consumption by at least 80% and replace it with locally sourced forest waste.

TRANSPORT AND MOBILITY

With its "Roadmap to Zero," SCHACHINGER has set itself a clear plan for fleet decarbonization. Currently, around 73% of the company cars in use are already electrically powered.

Last fiscal year, we added the first SCHACHINGER electric trucks and vans to our fleet. This marked the start of our decarbonization efforts across all vehicle categories. By gradually replacing our vehicles over the next few years, we will drastically reduce our largest CO₂ emitter.